

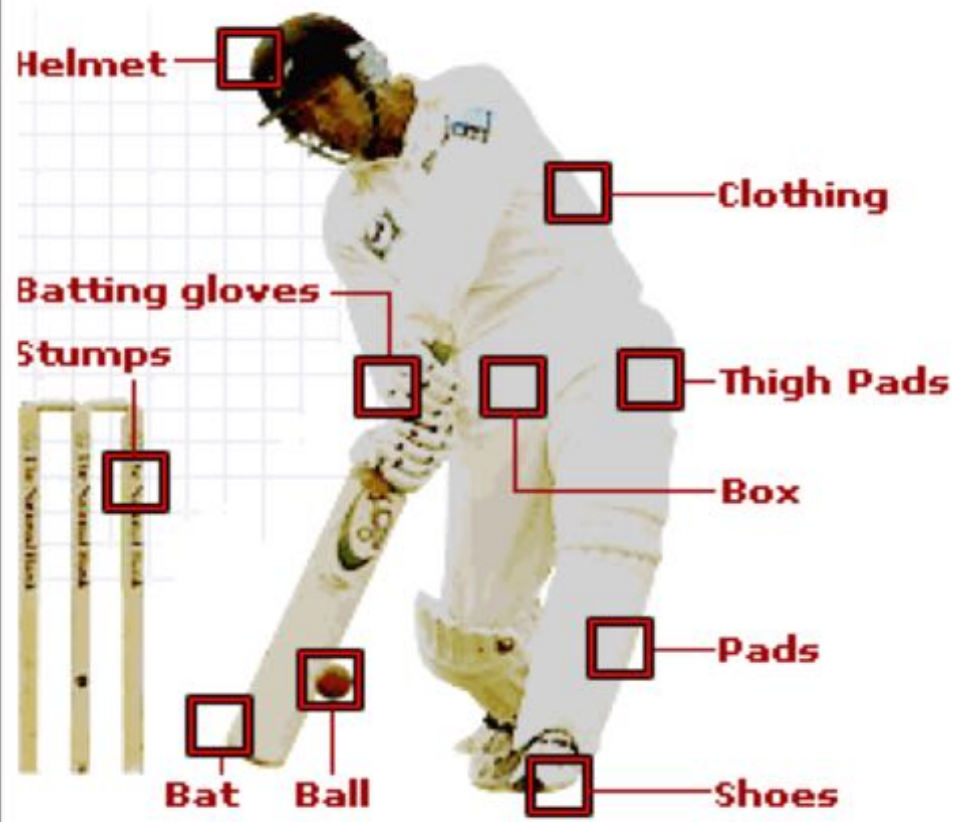


SUPER
SUNDAY









Helmet

Clothing

Batting gloves

Stumps

Thigh Pads

Box

Pads

Shoes

Bat

Ball



ICC CRICKET WORLD CUP 2019

TNT



E
P
H
E
S
I
A
N
S
6





Eph 6:10 A final word: Be strong in the Lord and in his mighty power. 11 Put on all of God's armour so that you will be able to stand firm against all strategies of the devil. 12 For we are not fighting against flesh-and-blood enemies, but against evil rulers and authorities of the unseen world, against mighty powers in this dark world, and against evil spirits in the heavenly places. 13 Therefore, put on every piece of God's armour so you will be able to resist the enemy in the time of evil. Then after the battle you will still be standing firm.

14 Stand your ground, putting on the belt of truth and the body armor of God's righteousness.

15 For shoes, put on the peace that comes from the Good News so that you will be fully prepared.

16 In addition to all of these, hold up the shield of faith to stop the fiery arrows of the devil.

17 Put on salvation as your helmet, and take the sword of the Spirit, which is the word of God.

18 Pray in the Spirit at all times and on every occasion. Stay alert and be persistent in your prayers for all believers everywhere.






TRUTH...



2 Corinthians 5:21
God made him who
had no sin to be sin
for us, so that in him
we might become the
righteousness of
God.



A stone tower with a crenellated top stands on a grassy hill. The foreground is filled with green grass and yellow wildflowers. The sky is blue with some light clouds.

The name of the Lord
is a fortified tower;
the righteous run to it
and are safe.

Proverbs 18:10

the
body of christ







Romans 5:1

**Therefore, since we have
been justified through
faith, we have peace with
God through our Lord
Jesus Christ**



*And beautiful are the feet of
those who bring good news!*

HOW?

The image features the word "HOW?" rendered in large, 3D, cartoonish letters. The letter 'H' is yellow, 'O' is blue, 'W' is purple, and the question mark '?' is red. Each letter has a pair of large, white, googly eyes with black pupils. The letters are set against a plain white background with a subtle drop shadow beneath them.

